

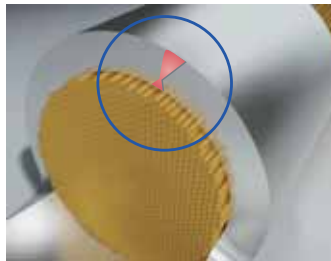
*One design,
a host of quality features.*



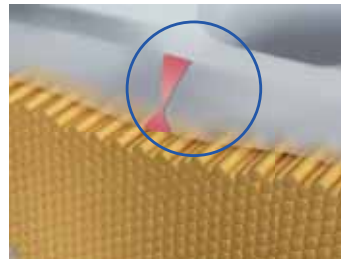
Solderless terminals to DIN 46234 and pin terminals to DIN 46230.

Klauke solderless terminals to DIN 46234 are the ideal solution for processing multi-stranded, fine stranded and superfine stranded conductors. Depending on the application, Klauke pin terminals to DIN 46230 are also the ideal solution for multi-stranded and fine stranded conductors. Special fork-type versions are also available.

All cable lugs are punched from highly conductive copper plate, hard soldered in the crimping area and equipped with a special grooved profile. The tin-plated finish ensures optimised protection against oxidation. The material is designed for continuous operation up to 120 °C.



The hard-soldered crimping area guarantees optimised stability. The soldering shows no signs of cracking, even after the crimping operation and the corresponding mechanical strain.



- **Hard-soldered solderless terminals and pin terminals with a grooved profile in the crimping area.**
- **Versions with halogen-free polyamide insulation.**
- **Special design for meter connections.**
- **Special connectors to DIN 46341 Form A and B.**